

PlasmaFlo® is a proprietary blend of proteolytic and fibrinolytic enzymes, concentrated plant extracts and potent antioxidants. Formulated to support the integrity of capillaries and improve the flowing properties of blood, PlasmaFlo® helps the delivery of vital nutrients, oxygen and stem cells throughout the entire body for optimum health.\*

PlasmaFlo® supports 3 vital vascular components:

1. Vascular flow – PlasmaFlo® provides enzyme nutrition to support the digestion of fibrin mesh in the bloodstream to improve circulation in capillaries.\*
2. Vascular integrity – PlasmaFlo® contains plant extracts that effectively support the integrity of capillary health.\*
3. Vascular health – PlasmaFlo® contains antioxidants to provide optimum nutrition to help prevent the formation of fibrin and combat oxidative stress and vascular inflammation.\*

**FEATURES & BENEFITS**

FEATURES	BENEFITS
<b>Systemic Enzymes</b> (proteolytic and fibrinolytic enzymes)	digest fibrin mesh and support a clear path for blood flow in capillaries*
<b>Gotu kola, Ginkgo biloba and Lemon Bioflavonoids</b>	supports the strength and flexibility of blood vessels and supports the integrity of capillaries*
<b>Hydroxytyrosol (olive extract), Astaxanthin, Sea buckthorn berry and Cacao</b>	well known for their role against oxidative stress in the blood*

**INGREDIENTS AND LABEL**

The label for PlasmaFlo 60 Capsules includes the following text:

PlasmaFlo® is an exclusive formula containing a proprietary blend of potent proteolytic and fibrinolytic enzymes, exotic plant extracts and powerful antioxidants.

PlasmaFlo is formulated to support the integrity of capillaries and improve the flowing properties of blood to aid in the circulation of stem cells for optimum tissue self-renewal.\*

- Supports optimal blood flow\*
- Supports the integrity of blood vessels and capillaries\*
- Reduces oxidative stress in the blood\*

**Caution:** Use only as directed. Do not take this product if you are pregnant or nursing. Consult a healthcare professional before use if you have existing medical conditions. Not intended for children. Store in a cool dry place.

\*These statements have not been evaluated by the Food and Drug Administration. This product is not intended to diagnose, treat, cure or prevent any disease.

**Supplement Facts**  
Serving Size: 2 capsules  
Servings per container: 30

Amount per serving	
<b>PlasmaFlo® Proprietary Blend</b>	
Systemic Enzymes	200 mg†
Fibrinolytic enzymes, Proteolytic enzymes, Bromelain	
<b>Vascular integrity</b>	320 mg†
Gotu kola extract, Lemon extract (40% bioflavonoids), Ginkgo biloba extract	
<b>Antioxidant Complex</b>	450 mg†
Sea buckthorn berry, Cacao powder, Olive fruit extract (hydroxytyrosol), Astaxanthin	

† Daily value not established.

**Other ingredients:** Hydroxymethylcellulose (Vegetable Capsule), Organic Rice Concentrate.

**Product does not contain** dairy, wheat, gluten, peanuts, soy or corn allergens. No artificial flavors or colors.  
100% vegetarian and non-GMO.

**cerule**  
Distributed by: Cerule, LLC  
Klanath Falls, OR 97801 USA  
541-422-7831 | www.cerule.com

**Product of USA**  
Item Code: PP161-02EN  
Rev JUN18V1

8 64690 00012 8

**Q&As**

**What does PlasmaFlo® do?**

Formulated to support the integrity of capillaries and improve the flowing properties of blood, PlasmaFlo® helps the delivery of vital nutrients, oxygen and stem cells throughout the entire body for optimum health.\*

**How does PlasmaFlo® support health?**

- Supports the integrity of blood vessels and capillaries\*
- Supports healthy blood flow\*
- Helps assist the body with reducing oxidative stress in the blood\*
- Helps support the circulation of stem cells\*

**Can PlasmaFlo® be consumed with other Cerule® products and other nutrients?**

Yes, the Cerule products can be consumed together and were designed to enhance the beneficial effects of each other. We know of no known concerning interaction between the Cerule products and other nutritional supplements.

For a full list of PlasmaFlo® Q&As, go to Cerule Back Office or ask the IBO that provided this Product Fact Page for assistance.

## SUGGESTED USAGE

To obtain the optimum benefit from the enzymes it is recommended to take 2 capsules daily 30 minutes before or 2 hours after a meal.  
For adult consumption.

## FURTHER DETAILS

No dairy, wheat, gluten, peanut, soy or corn allergens  
No artificial flavors or colors  
100% vegetarian and vegetable capsules  
Non-GMO

Pregnancy and nursing are considered special conditions. We recommend that your attending doctor(s) be made aware of any and all supplements consumed during this time. At this time, we do not advise PlasmaFlo® consumption during pregnancy.

If you have any health condition and/or are using any medication then consult your attending health care provider before consuming any nutritional supplement.

### For further information go to:

[www.cerule.com](http://www.cerule.com)

[www.facebook.com/ceruleglobal](https://www.facebook.com/ceruleglobal)

[www.youtube.com/cerule](https://www.youtube.com/cerule)

## NATURAL CONCENTRATES & EXTRACTS

Cacao



Ginkgo



Gotu Kola



Lemon



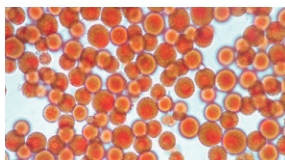
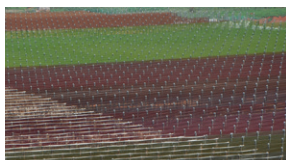
Olive



Sea Buckhorn



Astaxantin



## REFERENCES

Górnaś P, Šně E, Siger A, Segliņa D. Sea buckthorn (*Hippophae rhamnoides* L.) vegetative parts as an unconventional source of lipophilic antioxidants. *Saudi J Biol Sci.* 2016 Jul;23(4):512-6. Kruczek M1, Swiderski A, Mech-Nowak A, Król K. Antioxidant capacity of crude extracts containing carotenoids from the berries of various cultivars of Sea buckthorn (*Hippophae rhamnoides* L.). *Acta Biochim Pol.* 2012;59(1):135-7. Epub 2012 Mar 17.

Corti R, Flammer AJ, Hollenberg NK, Lüscher TF. Cocoa and cardiovascular health. *Circulation.* 2009 Mar 17;119(10):1433-41. Mastroiacovo D, Kwik-Urbe C, Grassi D, Necozone S, Raffaele A, Pistacchio L, Righetti R, Bocale R, Lechiara MC, Marini C, Ferri C, Desideri G. Cocoa flavanol consumption improves cognitive function, blood pressure control, and metabolic profile in elderly subjects: the Cocoa, Cognition, and Aging (CoCoA) Study—a randomized controlled trial. *Am J Clin Nutr.* 2015 Mar;101(3):538-48.

Umeno A, Horie M, Murotomi K, Nakajima Y, Yoshida Y. Antioxidative and Antidiabetic Effects of Natural Polyphenols and Isoflavones. *Molecules.* 2016 May 30;21(6). Tejada S, Pinya S, Del Mar Bibiloni M, Tur JA, Pons A, Sureda A. Cardioprotective effects of the polyphenol hydroxytyrosol from olive oil. *Curr Drug Targets.* 2016 Oct 5.

De Sanctis MT, Belcaro G, Incandela L, Cesarone MR, Griffin M, Ippolito E, Cacchio M. Treatment of edema and increased capillary filtration in venous hypertension with total triterpenic fraction of *Centella asiatica*: a clinical, prospective, placebo-controlled, randomized, dose-ranging trial. *Angiology.* 2001 Oct;52 Suppl 2:S55-9.

Mix JA, Crews WD Jr. A double-blind, placebo-controlled, randomized trial of *Ginkgo biloba* extract EGb 761 in a sample of cognitively intact older adults: neuropsychological findings. *Hum Psychopharmacol.* 2002 Aug;17(6):267-77.

Park JW, Kwon HJ, Chung WS, Kim CY, Seong GJ. Short-term effects of *Ginkgo biloba* extract on peripapillary retinal blood flow in normal tension glaucoma. *Korean J Ophthalmol.* 2011 Oct;25(5):323-8.

Mastantuono T, Battiloro L, Sabatino L, Chiurazzi M, Di Maro M, Muscariello E, Colantuoni A, Lapi D. Effects of Citrus Flavonoids Against Microvascular Damage Induced by Hypoperfusion and Reperfusion in Rat Pial Circulation. *Microcirculation.* 2015 Jul;22(5):378-90.

Struckmann JR. Clinical efficacy of micronized purified flavonoid fraction: an overview. *J Vasc Res.* 1999;36 Suppl 1:37-41. Review. Kishimoto Y, Yoshida H, Kondo K. Potential Anti-Atherosclerotic Properties of Astaxanthin. *Mar Drugs.* 2016 Feb 5;14(2). pii: E35. Baralic I, Andjelkovic M, Djordjevic B, Dikic N, Radivojevic N, Suzin-Zivkovic V, Radojevic-Skodric S, Pejic S. Effect of Astaxanthin Supplementation on Salivary IgA, Oxidative Stress, and Inflammation in Young Soccer Players. *Evid Based Complement Alternat Med.* 2015;2015:783761.

Régnier P, Bastias J, Rodriguez-Ruiz V, Caballero-Casero N, Caballo C, Sicilia D, Fuentes A, Maire M, Crepin M, Letourneur D, Gueguen V, Rubio S, Pavon-Djavid G. Astaxanthin from *Haematococcus pluvialis* Prevents Oxidative Stress on Human Endothelial Cells without Toxicity. *Mar Drugs.* 2015 May 7;13(5):2857-74.

Kotb E. The biotechnological potential of fibrinolytic enzymes in the dissolution of endogenous blood thrombi. *Biotechnol Prog.* 2014 May-Jun;30(3):656-72.

Sumi H, Hamada H, Nakanishi K, Hiratani H. Enhancement of the fibrinolytic activity in plasma by oral administration of nattokinase. *Acta Haematol.* 1990;84(3):139-43.

Numan D, Da Silva MA, Wikner LK, Duckert F. Thrombolytic treatment of arterial occlusions with brinase, a proteolytic enzyme produced by *aspergillus*. *Schweiz Med Wochenschr.* 1974 Dec 14;104(50):1865-7.

\* These statements have not been evaluated by the Food and Drug Administration. This product is not intended to diagnose, treat, cure or prevent any disease.